

**Rooftop protection**  
Solar Canopy and Extensive Vegetation provides solar protection to expand outdoor thermal comfort ranges during increased temperature events. MEP equipment is screened to minimize impacts from winds and storms

**Decoupled ventilation and space conditioning systems**  
Treated fresh air is delivered directly to each apartment and common area through a Dedicated Outside Air System (DOAS), which includes a high efficiency filtration system (MERV 13). The VRF systems allows the ventilation air to be decoupled from the heating and cooling systems. This results in the elimination of air recirculation, which mitigates the transfer of contaminants ensuring a healthy indoor environment

**Green space**  
Rooftop Community Garden, Podium Greenroof, and Landscaped Pritzker Park reduce total Heat Island Effect and provide cool areas of relief for occupants

**No basement**  
Below grade space has been eliminated and all major MEP Systems are located above the ground floor to facilitate continued operations while mitigating flood risk

**Reliable heat exchange**  
Geothermal ground loop to provide consistent annual heating and cooling independent of outdoor conditions and climate fluctuation

**Rainwater Capture & Re-Use**

**Solar Generation & Control**

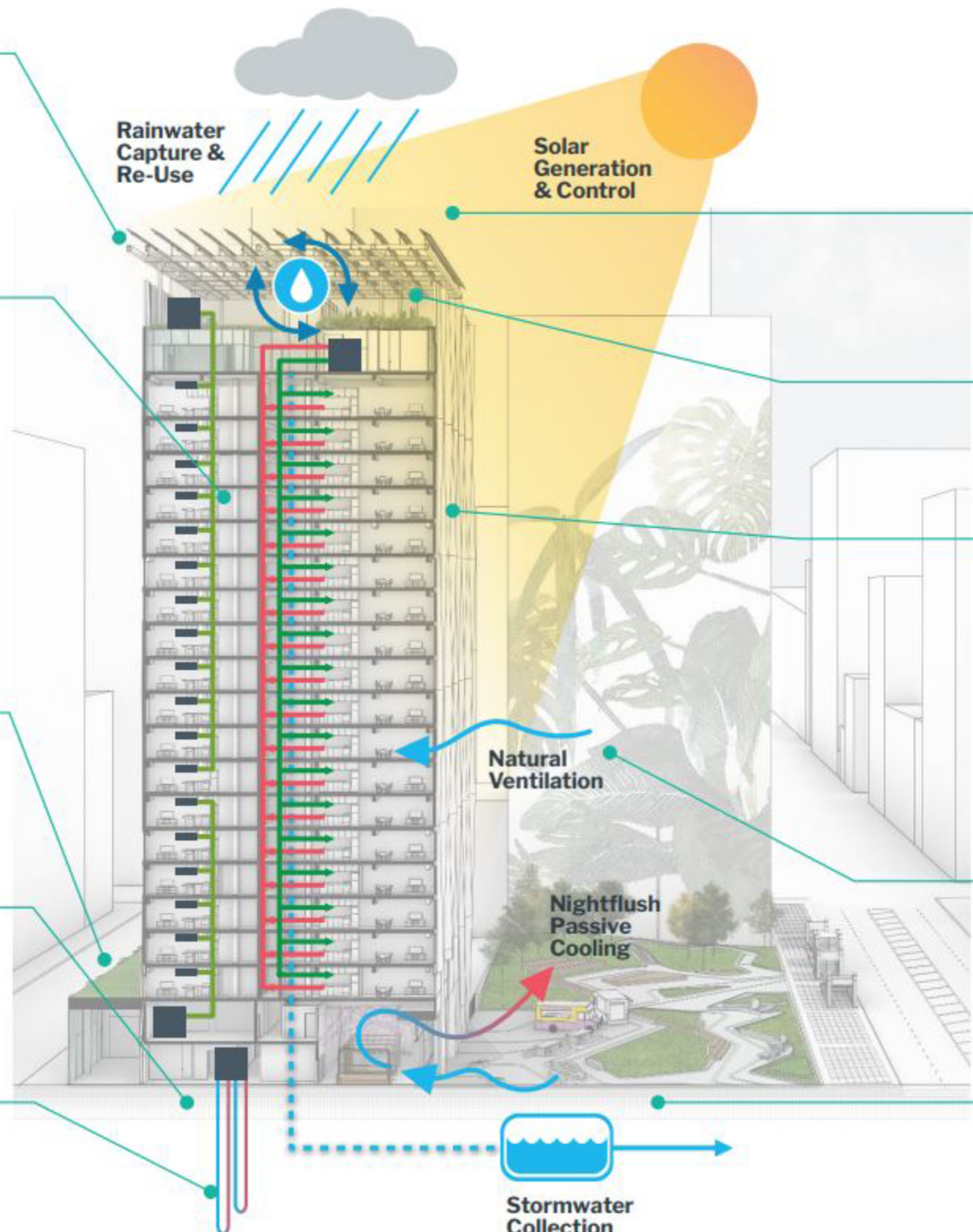
**Renewable energy generation**  
On-site electricity production to reduce dependency on the electrical grid

**Tesla powerwall battery storage**  
Backup power ready for grid outages to provide residential lighting and common area refrigeration

**High performance façade**  
Insulated, shaded, and airtight envelope maintains indoor thermal comfort conditions during extreme weather swings and power outages. This approach reduces the overall impact outdoor conditions have on the Heating & Cooling loads, making the HVAC systems more resilient

**Natural ventilation**  
Operable windows allow for fresh air relief during power outages

**Stormwater management**  
98% on-site management of stormwater to reduce load during Urban Flooding events and minimize overall stress on the municipal stormwater system



**Natural Ventilation**

**Nightflush Passive Cooling**

**Stormwater Collection**